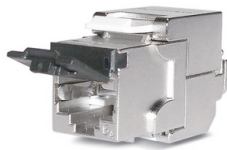


## KS-T Plus 1/8 tool-less Cat.6<sub>A</sub> (IEC)

RJ45 module, afgeschermd, Categorie 6<sub>A</sub> (IEC)



RJ45 module KS-T Plus 1/8 tool-less Cat.6<sub>A</sub> (IEC), afgeschermd, met stofluikje



### BESCHRIJVING

For the transmission of digital and analogue voice-, video- and data signals. The KS-T Plus RJ45 module is specified up to 500 MHz in compliance with the component standard IEC 60603-7-51.

Enables acceptance testing with high spare capacity at the limit values stipulated for Class EA Permanent Links when combined with shielded Category 6A, 7 and 7A data cables. Therefore it is applicable for 10-gigabit Ethernet transmissions in accordance with IEEE 802.3.

Useable for PoE, PoE+ and 4PPoE application. Solid zinc die casting housing with mounting clip for installation in Keystone panels and outlets. Contact spring with phosphor bronze alloy, plated with gold. For connecting the wires a wire manager is used in combination with two integrated moveable housing wings for tool-less IDC connections. Only for cutting the wires a plane wire cutter is necessary. The 360° metal shield ensures a durable fully shielded environment. Strain relief via cable tie. The module is re-usable. Potential balancing possibility directly at the module when needed. With removable black dust shutter. Other colours available as accessories sets.

### MECHANISCHE EIGENSCHAPPEN

Massieve koperdraad	0.50 mm (AWG 24) tot 0.65 mm (AWG 22)
Heraansluiting	voor AWG 22, AWG 23 en AWG 24 bij gebruik van dezelfde of een grotere draaddiameter
Meervoudige koperdraad	CU 7702 flex (AWG 26/7), eenmalig herbruikbaar
Diameter ader (met isolatie)	0.70 mm tot 1.40 mm (1.60 mm)
Temperatuurbereik	in opslagruimte: -40°C tot +70°C tijdens installatie: -10°C tot +60°C in dienst: -20°C tot +60°C

### ALGEMENE EIGENSCHAPPEN

Handleiding voor de aansluiting van de draden met kleurcodering volgens T568-A of B.

### NORMEN / STANDAARDS

Cat./Klasse	Cat.6 <sub>A</sub> / Class E <sub>A</sub>
Normen / Standaards	IEC 60603-7-51 (Cat.6 <sub>A</sub> shielded, 500 MHz) IEC 60512-99-002 (4PPoE) ISO/IEC 11801:2002 / Amd.2:2010 EN 50173-1:2011 TIA/EIA 568-B.2-10:2008

### VERSIES

Artikelnr.	Artikel	Kleur	VE
418061	RJ45 module KS-T Plus 1/8 toolless Cat.6 <sub>A</sub> (IEC) afgeschermd, met stofluikje	zwart	10 stk.