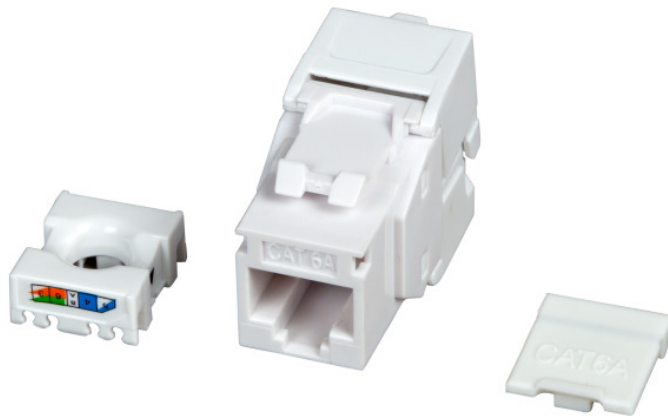


DATASHEET

INFRALAN® RJ45 Keystone UTP, Cat.6A / ClassEA



Description

The RJ45 module provides a combination of excellent transmission properties and simple toolless assembly. The high quality of the module guarantees very good properties for 10 Gigabit Ethernet applications. The RJ45 keystone module is in combination with the Patchpanel IVF-24-SW-UTP **ETL-certified**. Special tool is not necessary. The assembly is quick and easy to realize. With the RJ45 keystone you get an unshielded module, which offers you a long time good service in your network installation.

Specifications:

Plastic housing PC+ABS
Cat.6A component certified acc. to ANSI/TIA-568-C.2 and ISO/IEC 11801
Compact cable presorter for AWG 24/1 .. 22/1
Pair management according to TIA 568A /B colour codes
Appropriate for all distribution panels and frames with keystone slots
Recommended distribution panel, ANEXT optimized: IVF-24-SW-UTP

Scope of delivery:

1 x RJ45 keystone, Cable coder, 1 x hinged dust cover, 1 x cable tie, 1 x mounting instruction

General data

Category	6A (IEC)
Model	jack (jack)
Connection type	IDC
Type of connector	RJ45 8(8)

DATASHEET

INFRALAN® RJ45 Keystone UTP, Cat.6A / ClassEA

General data

Screened	No
AWG-range for solid core	24 - 22
Special tool necessary	No
Suitable for round cable	Yes
Suitable for flat cable	No
Suitable for litz wire conductor	Yes
Suitable for solid core	Yes
Housing material	PC-ABS
Dust cover	yes
Complaint to UL94	V-0
For UAE suitable	No

Mechanical characteristics

Max. cable diameter	8.5 mm
Mating cycles	≥ 750
Contact coating	50 μ"

Environmental conditions

Temperature range	-40 - 66 °C
-------------------	-------------

Electrical characteristics

Dielectric Withstanding Voltage	1000 V AC 60Hz
Current Rating	2 A
Insulation Resistance	≥ 500 MΩ
Contact Resistance	≤ 20 mΩ
4PPOE certified	yes

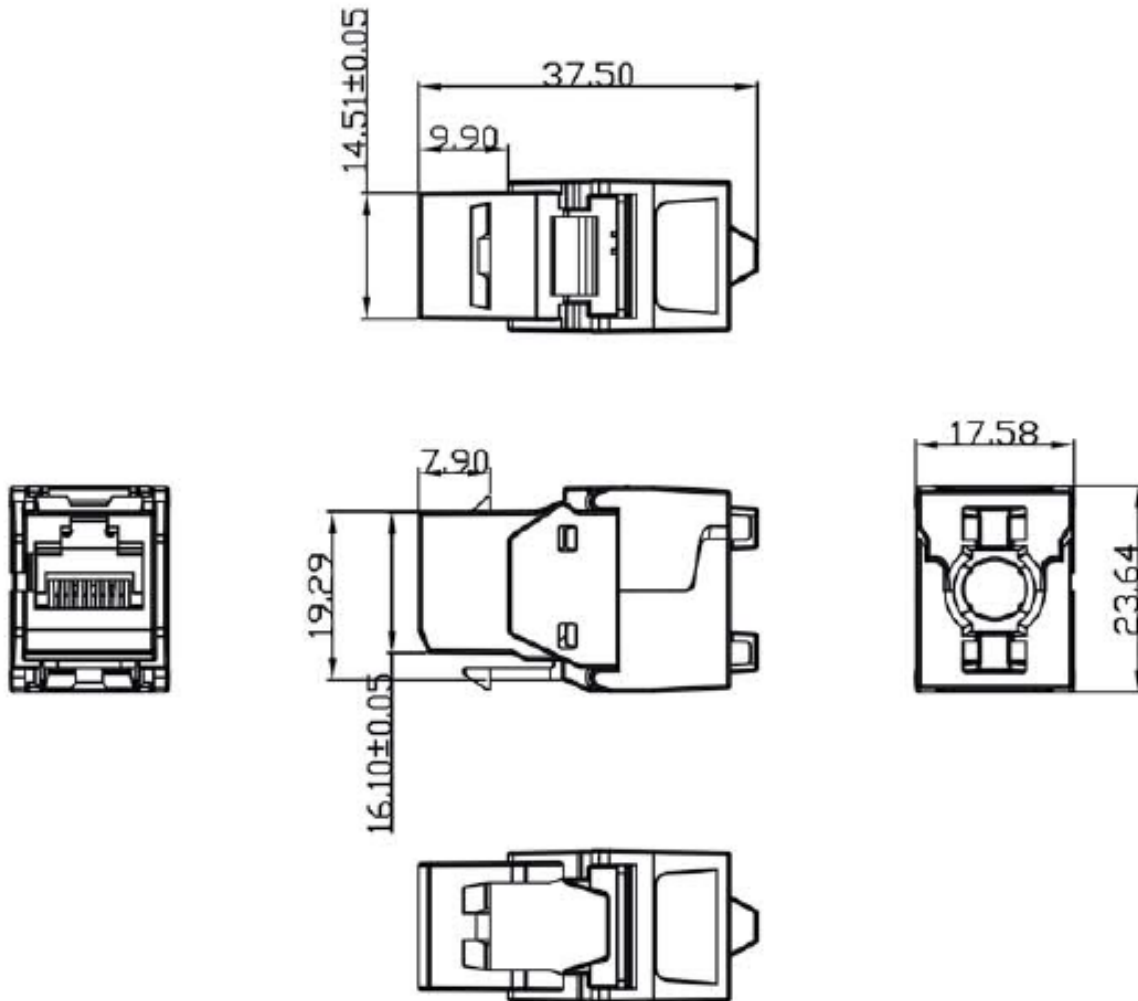
Available variants

Article no.	Title	Colour
IKU-6A-KOP-1	INFRALAN® RJ45 Keystone UTP, Cat.6A, 500MHz, component certified	white
IKU-6A-KOP-12	INFRALAN® RJ45 Keystone UTP, Cat.6A, 500MHz, component certified, PU12	white

DATASHEET

INFRALAN® RJ45 Keystone UTP, Cat.6A / ClassEA

Technical drawings



accessory

IPK-6A-U-HFR-WS-0050	INFRALAN® Patch cord U/UTP Cat.6A, moulded grommet, white
99965.500-CPR	INFRALAN® Installation Cable U/UTP Cat.6A 500MHz
IVF-24-SW-UTP	INFRALAN® Distribution Panel 19", 1U
IPK-6A-U-HFR-BL-0150	INFRALAN® Patch cord U/UTP Cat.6A , moulded grommet, blue
IPK-6A-U-HFR-SW-0750	INFRALAN® Patch cord U/UTP Cat.6A, moulded grommet, black
IPK-6A-U-HFR-GN-0150	INFRALAN® Patch cord U/UTP Cat.6A, moulded grommet, green
IPK-6A-U-HFR-GR-0300	INFRALAN® Patch cord U/UTP Cat.6A, moulded grommet, grey
IPK-6A-U-HFR-RT-0150	INFRALAN® Patch cord U/UTP Cat.6A, moulded grommet, red

DATASHEET

INFRALAN®



Je bereikt meer met de juiste connecties!

INFRALAN® RJ45 Keystone UTP, Cat.6A / ClassEA

accessory

IPK-6A-U-HFR-GE-0750

INFRALAN® Patch cord U/UTP Cat.6A, moulded grommet, yellow