

# DIAMOND Fiber Optic Components

## CABLE ASSEMBLIES AND ADAPTERS

### SPECIFICATIONS

|                       | MULTIMODE<br>0° PC     | SINGLE MODE<br>0° PC | SINGLE MODE<br>8° APC | UNITS | TEST CONDITIONS                               |
|-----------------------|------------------------|----------------------|-----------------------|-------|---|
| Insertion Loss (IL)   | typ. 0.2 max. 0.4      | typ. 0.2 max. 0.4    | typ. 0.2 max. 0.4     | dB    | IEC 61300-3-4; $\lambda = 1300/1550\text{nm}$ |
| Return Loss (RL)      | min. 35 typ 40         | min. 45 typ 50       | min. 70*              | dB    | IEC 61300-3-6; $\lambda = 1300/1550\text{nm}$ |
| Repeatability of IL   | max $\pm 0.1$          |                      |                       | dB    | IEC 61300-2-2; $\lambda = 1300/1550\text{nm}$ |
| Service life          | 1000 mate/demate cycle |                      |                       | -     | According to field experience                 |
| Operating temperature | -40/+85**              |                      |                       | °C    |   |
| Storage temperature   | -40/+90**              |                      |                       | °C    |   |

\* Measured with high precision reflectometer

\*\* May be further limited by cable specifications

### APPLICATIONS

- ▶ Telecommunications, CATV, LAN, MAN, WAN, Test & Measurement, Industry, Medical, Sensors

### STANDARDS

- ▶ IEC 61 754-4 "Fiber optic interfaces -Type SC connector family"
- ▶ TIA/EIA 604-3-A "Fiber optic intermateability standard -Type SC"

### DESIGN/MATERIALS

- ▶ Adapter: Floating zirconia sleeve in plastic housing
- ▶ Connector: Plastic, with push-pull mechanism

### AVAILABLE AS

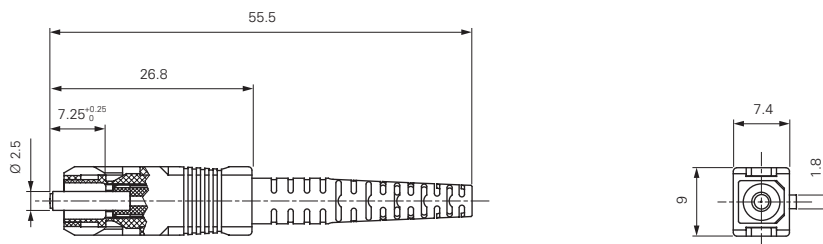
- ▶ Terminated connector
- ▶ Connector set, (to be terminated with Diamond special equipment)

### CONNECTOR TYPES AND DIMENSIONS

SC Simplex connectors 900  $\mu\text{m}$  - 3 mm boot style

Available types: **SC Simplex PC**  
**SC Simplex APC**

Ferrule material: Zirconia/metal insert  
External parts: Plastic

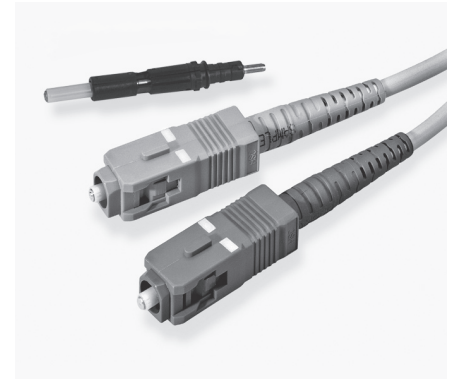


DIAMOND SA • Via dei Patrizi 5 • CH-6616 Losone • Switzerland  
Tel. +41 91 785 45 45 • Fax +41 91 785 45 00 • e-mail info@diamond-fo.com

[www.diamond-fo.com](http://www.diamond-fo.com)

## SC Simplex

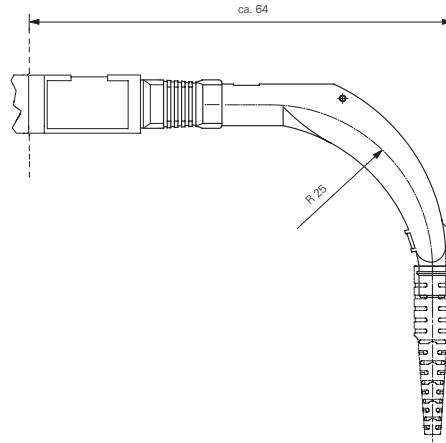
SINGLE MODE PC/APC  
MULTIMODE PC



Specifications subject to change  
without notice

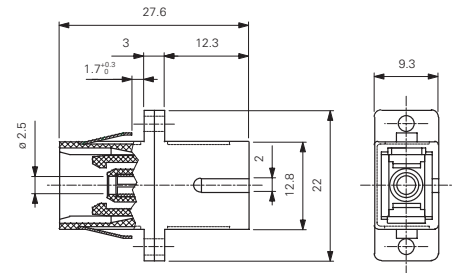
BDD 1950063 048

SC Simplex connectors 900 μm - 3 mm 90° boot style

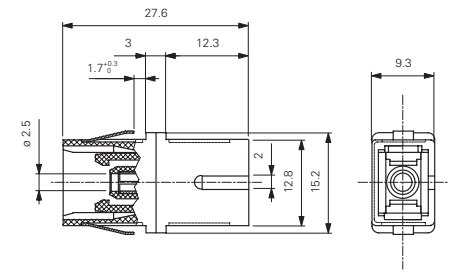


ADAPTER TYPES AND DIMENSIONS

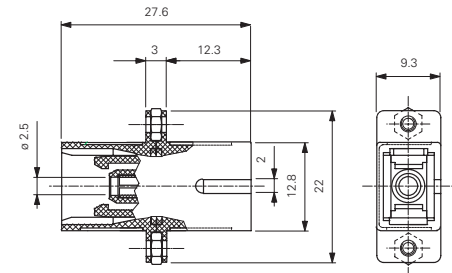
SC Simplex mating adapter screw and clip fixing type



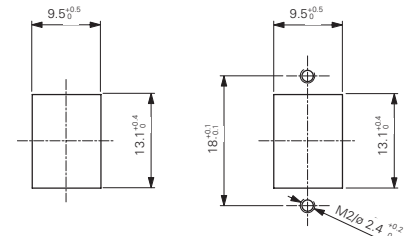
Small SC Simplex mating adapter with quick fixing clip



SC Simplex mating adapter with screws-nut fixation



CUTOUT DIMENSIONS



**NOTE** As standard, Diamond uses colored connector bodies, cable boots and mating adapter housings to identify the fiber type (SM or MM 50/62.5μm) and ferrule polish (PC or APC).

Diamond's standard **connector/boot/adaptor** colors are as follows: Beige/ Black/Beige for MM PC 50μm, Beige/Beige/Beige for MM PC 62.5μm, Blue/Blue/Blue for SM PC, and Green/Green/Green for SM APC. Other colors are available upon request.

ORDER INFORMATION

When ordering **standard** pigtailed and patchcords and mating adapters, please refer to the part numbers provided in the enclosed P/N list.

When ordering pigtailed or cable assemblies, please refer to the **connector type description** in the Available types section, and fill in the Simplex, Duplex, Multiple fiber Assemblies order form according to **those** denominations.